

Welcome to Greenside Primary School

Open Evening for Prospective Parents/Carers:

Wednesday 12th November 2025



Meet the Team

Our Senior Management Team:



Mrs Fuller
Headteacher



Mr Lockwood
Co-Deputy Headteacher
KS2 Leader



Mrs Hair
Co-Deputy Headteacher
SENCO



Mr Phillips
Assistant Headteacher
EYFS & KS1 Leader

Family Support:



Mrs Middleton
Family Liaison Officer

Let's hear from our children



Welcome to Greenside

A warm welcome to Greenside Primary School!

At Greenside, our goal is to ensure that each individual has the skills and knowledge needed to succeed in life and to become a lifelong learner. We pride ourselves on our rich, broad and balanced curriculum that challenges our children and is bespoke to their interests and needs.

Our inspiring and innovative classroom teaching with a wide variety of residential, educational visits, workshops and clubs brings our curriculum to life.

Visions and Values

Our vision and values were written in collaboration with our children, staff and parents. To be '**Great at Greenside**' we value:

- Safety
- Collaboration
- Inclusion
- Respect
- Honesty
- Recognition
- Reflection
- Aspirations
- Happiness



All About Greenside

Greenside Primary is a popular and high-achieving school which is at the heart of the Pudsey Community. We are a 'Good' school, as graded by Ofsted in June 2024, and have an active and supportive governing body. We are proud that we consistently achieve in line or above national average for national expectations. Ensuring that all children achieve their best.

Our school is located across two secured sites, separated by a ginnel. Our new Reception site offers fantastic indoor and outdoor learning environments, whilst our historic main school building offers a characterful setting to learn.



We strongly value our partnerships with parents, carers and members of the community, who make a positive contribution to the life of the school. Our FROGs is an enthusiastic parent body that work in partnership with the school to raise funds and provide additional opportunities for our pupils.

What our Parents Think

We utilise each and every opportunity for both formal and informal feedback from our parents and carers and use this to keep improving as a school. Here are some headlines from our annual questionnaire in July 2025:

- 100% believe their child is **happy at Greenside.**
- 100% believe their child is **safe and well cared for.**
- 95% believe their child **makes good progress**
- 97% believe that Greenside provide a **good range of subjects and experiences.**
- 96% believe school **ensures all children are well behaved**

Parental Feedback:

Teachers and teaching assistants were consistently described as:

- Caring, approachable, and hardworking.
- Welcoming to both children and parents.
- Readily available to address concerns
- SEND support highlighted as exceptional.

The school is seen as:

- Safe, inclusive, and nurturing.
- A place where children are happy and eager to learn.
- Offering engaging and effective teaching.
- Focused on both academic progress and emotional wellbeing.

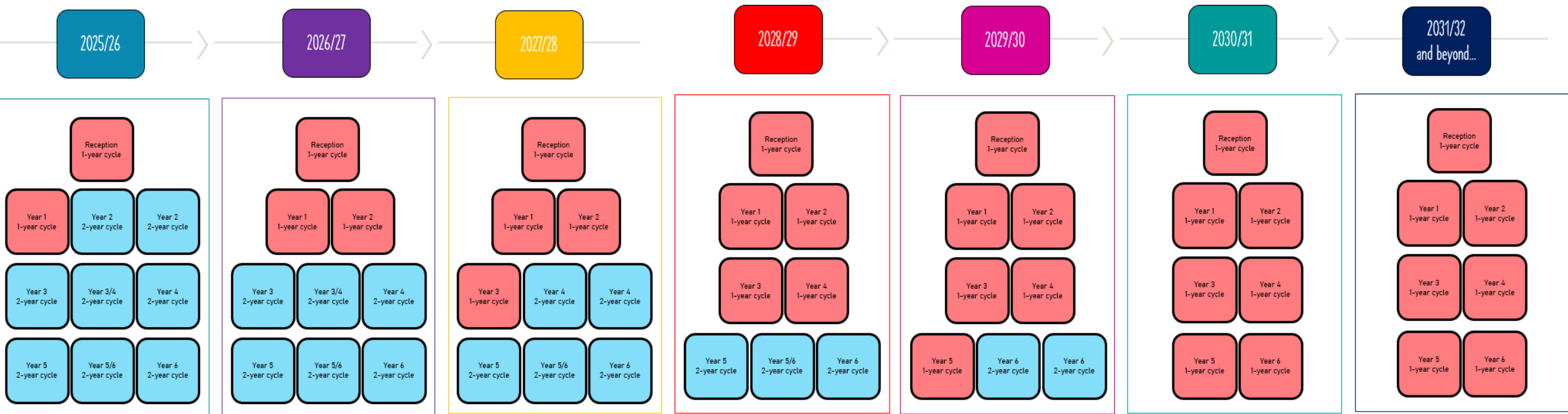
Greenside is recognised for:

- An inclusive ethos and individualised support.
- Tailored interventions and regular meetings for children with additional needs.
- Celebrating diversity and promoting understanding.

All About Greenside

We have a current school roll of 276 pupils, aged 4-11. Previously, we have had an annual intake of 45 pupils. However, due to a falling birth rate across Leeds and surplus places in primary schools across the Pudsey cluster, our annual intake was reduced to 30 pupils effectively from September 2024.

This means that Greenside is now a one-form entry school and pupils will move through school as one class. Our current Reception and Year 1 cohorts have 30 pupils, so our Reception 26-27 cohort will be the third class to follow this new model.



Staff have redesigned the curriculum for the new classes to follow a one-year cycle. The above visual shows how we will be phasing out our two-year rolling cycle and how classes from 2024 onwards will be taught our new curriculum.

There are many advantages of moving to one-form such as pupils will remain part of a settled class throughout school, teachers can provide more targeted teaching for curriculum subjects with specific year group objectives and we can free up more space around school to develop facilities e.g. for a new library.

Reception at Greenside

At Greenside, we are extremely proud of the Early Years provision that we offer. Based on it's own site, our indoor and outdoor environments provide the perfect learning setting for Reception pupils, whilst our curriculum is specifically designed to meet the needs of all children and provide the building blocks for successful learning throughout school.

What do we offer?

- A comprehensive and effective transition process between Nursery and Reception.
- Reception classes on separate site for more individualised learning, which supports children to settle in to life at school.
- Specially designed classrooms which allow pupils to be expressive and independent with their learning.
- Unique outdoor areas that support learning across the curriculum and allow pupils to explore the natural world.





Reception Outdoor Environment





Reception Indoor Environment



The Early Years Curriculum

Our Early Years curriculum is specifically designed using the seven areas of learning and development in conjunction with our school-wide curriculum drivers. The aim of our curriculum is to build on what our children already know, so that they develop the knowledge and skills required for their future learning.



We recognise that every pupil is a unique child, with individual needs and interests. As early years practitioners, it is important that these should be recognised and responded to, so that we can provide the most effective environment and programme of study for our pupils.

We believe that a key way to develop the cultural capital of our Reception pupils is through regular exposure to a range of high-quality literature. We have carefully selected a range of key texts to drive learning across the different areas of the EYFS curriculum.

Autumn 1	Autumn 2	Spring 1	Spring 2	Summer 1	Summer 2
<p>'Leaf Man' (Resistant Text)</p>	<p>'The Colour Monster' (Resistant Text) (PSED – Self-Regulation)</p>	<p>'And Tango Makes Three' (Reflecting Realities: LGBT)</p>	<p>'Voices in the Park' (Text with Non-Linear Sequence/Narratively Complex)</p>	<p>'The Princess and the Pea' (Text with Archaic Language)</p>	<p>'The Day the Crayons Quit' (Text with Archaic Language)</p>
<p>'Fletcher and the Falling Leaves' (Theme: Autumn)</p>	<p>'Rama and Sita, The Story of Diwali' (Reflecting Realities: Faiths and Religions)</p>	<p>'The Polar Bear Son' (Reflecting Realities – Cultures from Around the World)</p>	<p>'The Tale of Peter Rabbit' (Text with Archaic Language)</p>	<p>'The Very Smart Pea and the Princess-to-Be' (Text with Archaic Language)</p>	<p>'A Superhero Like You!' (Theme: Aspirations)</p>
<p>'Tree: Seasons Come, Seasons Go!' (Theme: Autumn)</p>	<p>'The Night Before Christmas' (Poem) (Text with Archaic Language)</p>	<p>'The Rainbow Fish' (PSED – Becoming a Friend)</p>	<p>'A Place Called Home: Look Inside Houses Around the World' (Reflecting Realities – Cultures from Around the World)</p>	<p>'Grandad's Island' (Symbolic Text: PSED – dealing with loss /perspective of others)</p>	<p>'Clean Up!' (Theme: Aspirations)</p>
<p>'The Big Pumpkin' (Theme: Autumn)</p>	<p>'The Gunpowder Plot' (Reflecting Realities – Cultures from Around the World)</p>	<p>'Lost and Found' (Resistant Text) (PSED – Friendship)</p>	<p>'Slug Needs a Hug!' (Symbolic Text)</p>	<p>'Fatou, Fetch the Water' (Reflecting Realities – Cultures from Around the World)</p>	<p>'All the Ways to be Smart' (PSED – Celebrating differences/Valuing myself)</p>

The Wider School Curriculum

At Greenside Primary School, we believe that our curriculum should offer children not only the National Curriculum but life skills and experiences beyond this.

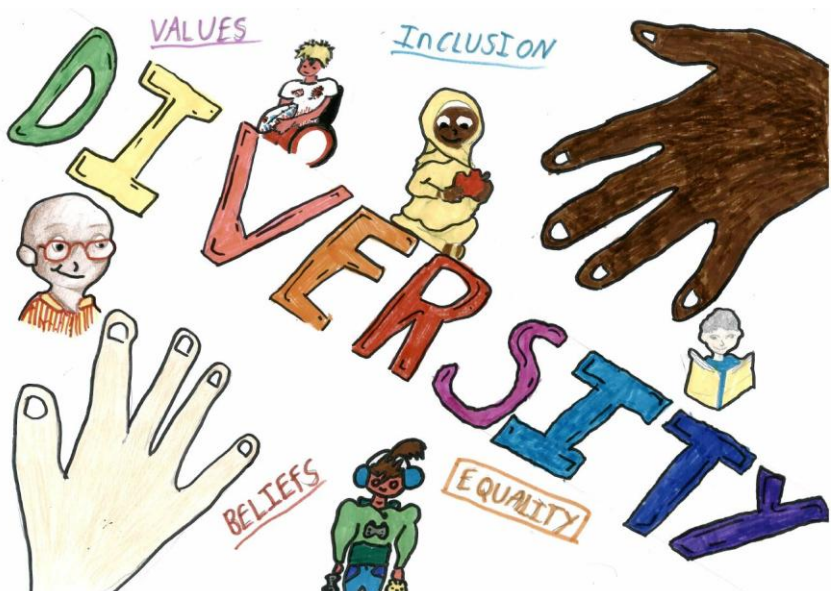
Greenside is a school '*Where Children Come First*' and our curriculum has been carefully constructed with our pupils at the forefront of our minds: through collaboration with stakeholders, we have rigorously re-designed our curriculum with the intent of developing a learning journey that is engaging, accessible and ambitious for all, which responds to the changing contextual needs of our pupils. Through quality-first, responsive and adaptive teaching and learning, we aim to provide an inclusive curriculum that enables all our pupils to succeed in our school and beyond.

Personal development is a fundamental element of pupils' learning at Greenside Primary School. This is reflected by our 'Greenside Learning Powers' which promote the key learning behaviours and attitudes of being **responsible, determined, reflective, resourceful** and **effective**.



The Wider School Curriculum

Our bespoke 'curriculum drivers' underpin the learning and experiences our children will undertake in all areas of school life and ensure our curriculum offer is enriched. These drivers are personal to our school and reflect the social and educational needs of Greenside Primary School's context.



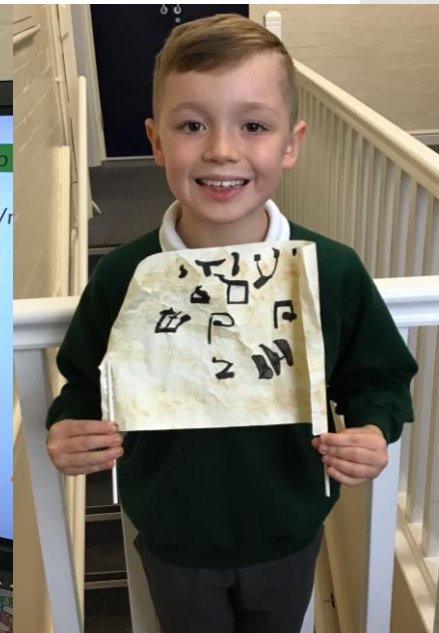
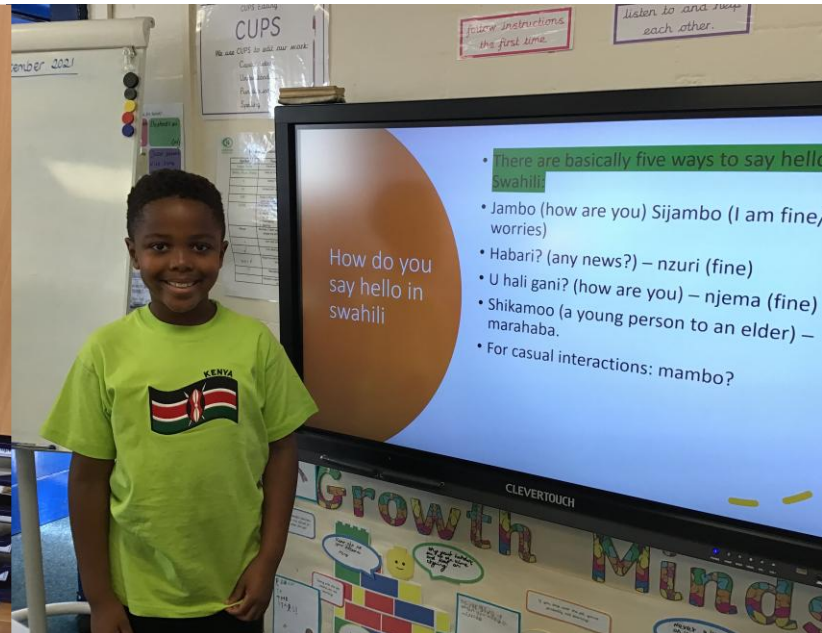
Curriculum Enhancements and Extra-Curricular Provision

At Greenside we enhance our curriculum through a variety of workshops, educational visits and regular themed weeks/days. These are built into the curriculum for each phase and tailored to ensure they are age appropriate. Some are celebrated by the whole school and others by a particular phase and are built into our curriculum cycle. Below is a flavour of what we offer:

Author Day
Christmas Jumper Day
Yom Kippur
Art Week
Int'l Women's Day
Holi
Engineering Week

Storytelling Week
European Day of Languages
Chinese New Year
National Poetry Day
Safer Internet Day
Diwali
Anti-Bullying Week

World Mental Health Day
World Book Day
Black History Month
Science Week
Hanukkah
Geography Week



Curriculum Enhancements and Extra-Curricular Provision

At Greenside, we are proud to offer a range of extra-curricular opportunities for our pupils.

We currently run a range of after-school clubs which are led by either a member of school staff or an outside teacher/coach. These include kids' karate, drama club, football clubs and choir, as well as music lessons to learn to play the keyboard, guitar and drums.



In Upper Key Stage 2, pupils also have the opportunity to go on two residential trips:

- In Year 5, pupils visit Whitby for 2 nights.
- In Year 6, pupils visit Weardale Adventure Centre for 4 nights.



Lunchtime



Parents/Pupils choose their lunch online at home.



Our school lunches are cooked on site by Leeds Catering. We proud to say that we provide four healthy options for pupils to choose from each day and cater for all dietary needs.

School lunch tasters
We hope parents/carers enjoyed the opportunity to sample some of the lunch menu.

SCHOOL: **Pudsey Greenside**

LUNCHTIME MENU

Menus are subject to availability

Week 1 w/c 24/02/25, 17/03/25, 07/04/25, 28/04/25, 19/05/25, 09/06/25, 30/06/25, 21/07/25

MONDAY **TUESDAY** **WEDNESDAY** **THURSDAY** **FRIDAY**

Chicken Curry Rice Seasonal Vegetables	Pork Sausage Mashed Potatoes Seasonal Vegetables	Vegetarian Shepherd's Pie (v) Seasonal Vegetables	Roast Chicken Yorkshire Pudding Mashed and Roast Potatoes Seasonal Vegetables	Battered Fish Chips Seasonal Vegetables
Margherita Pizza (v) Jacket Wedges Seasonal Vegetables	Vegetarian Sausage (ve) Mashed Potatoes Seasonal Vegetables	Cheese and Onion Roll (v) Jacket Wedges Seasonal Vegetables	Vegetarian Sausage (ve) Yorkshire Pudding Mashed and Roast Potatoes Seasonal Vegetables	Cheesy Topped Ravioli (v) Chips Seasonal Vegetables
Jacket Potato with Halal Chicken Curry Seasonal Vegetables	Vegetarian Sausage (ve) Mashed Potatoes Seasonal Vegetables	Vegetarian Shepherd's Pie (v) Seasonal Vegetables	Halal Roast Chicken Yorkshire Pudding Mashed and Roast Potatoes Seasonal Vegetables	Battered Fish Chips Seasonal Vegetables
Cheese Salad Wrap (v) Jacket Wedges	Wholemeal Tuna Bap Jacket Wedges	Wholemeal Cheese Sandwich Jacket Wedges (v)	Hot Roast Chicken Bap Roast Potatoes Seasonal Vegetables	Wholemeal Egg Mayonnaise Sandwich (v) Chips
Jacket Potato Chunky Tomato Sauce (ve)	Jacket Potato Cheese (v)	Jacket Potato Tuna Mayonnaise		Jacket Potato Baked Beans (v)
Ice Cream Sliced Peaches	Chocolate Sponge and Chocolate Custard	Apple Flapjack	Strawberry Jelly	Shortbread Cookie Fresh Fruit

Leeds CITY COUNCIL

(V) = VEGETARIAN
(VE) = VEGAN



WE PRODUCE OUR FOOD, FRESH EVERY DAY IN KITCHENS WHERE ALLERGENS ARE HANDLED BY OUR STAFF. WHILE WE TAKE EXTREME CAUTION TO MINIMISE THE RISK OF CROSS CONTAMINATION AND MEALS ARE PRODUCED WITH THE UTMOST CARE AND ATTENTION, WE CANNOT LEGALLY GUARANTEE MEALS WILL BE ALLERGEN-FREE EVEN AFTER ALLERGEN INGREDIENTS HAVE BEEN REMOVED FROM OUR RECIPES. CATERING LEEDS WILL NOT INTENTIONALLY USE ANY TREE-NUTS, PEANUTS OR SESAME, OR ANY PRODUCT CONTAINING NUTS/SESAME AS AN INGREDIENT WITHIN OUR FOOD OFFER. INGREDIENTS OR ITEMS DECLARED AS "MAY CONTAIN NUTS" ARE ALSO EXCLUDED FROM OUR MENUS.



SEND and Inclusion

Safeguarding Lead:

Mrs Fuller is the Designated Safeguarding Lead. In Mrs Fuller's absence Mr Lockwood, Mrs Hair, Mrs Middleton and Mr Phillips are also trained Designated Safeguarding Officers. If you have any concerns about the welfare of a child at Greenside you can speak privately to Mrs Fuller. She ensures within school that all safeguarding procedures are followed and liaises with agencies from health, social services, young people's service and the police to ensure a multi-agency approach in relation to safeguarding is adopted.



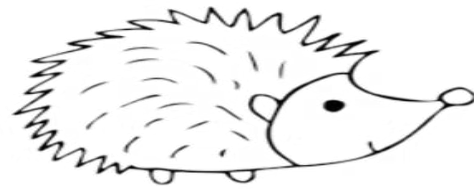
SENDCo:

Mrs Hair, who is our SENDCo, works closely with your child's teacher, to identify children needing support. She organises extra support to meet your child's precise needs. This support may be provided by adults in school or specialists from outside of school such as Speech and Language Therapists. If you think your child may need additional support or you are worried about your child's progress please talk to the class teacher or Mrs Hair.



Child and Family Support Team: Mrs Middleton, our Family Liaison Officer, supports children and families who are having difficulties with behaviour, learning or need emotional support. She often runs group or individual sessions for children to help them cope with change and challenging situations. Mrs Middleton also monitors the children's attendance at school and meets regularly with the Senior Management Team to discuss any concerns. She works together with parents to help improve both punctuality and attendance. Mrs Middleton can be contacted by telephone or email (familysupport@greenside-sch.org) and is available to meet parents/carers before or after school.





• Greenside Care Club •

- Providing onsite childcare to children at Greenside Primary school for over 25 years.
- Provides a range of childcare for children ages 3-11 years
 - Before and after school care
 - Holiday play scheme
 - Nursery education for children aged 3 & 4 year olds.
- For further information please contact Gill Pullan, greensidecareclub@gmail.com or call 01132562322

Visit our website www.greensidecareclub.org.uk



Where can I find out more?



[About Us](#)

[Key Information](#)

[News and Events](#)

[Parents](#)

[Curriculum](#)

[Contact](#)



Welcome To Greenside Primary School

Where Children Come First



AWARDS



FACEBOOK



THE GRAPEVINE

[Admissions for
Reception 2026-2027](#)

[Attendance](#)

[Care Club](#)

[Clubs-Extra Curricular](#)

[Dinners](#)

[FROGS](#)

[Health](#)

[Milk](#)

[Opening
Times/Holidays](#)

[Safeguarding](#)



ATTENDANCE

<https://greenside-primary-school.secure-primariesite.net/admissions-for-reception-2026-2027/>

www.greenside-sch.org

Our school website hosts lots of information about the school and we have a designated webpage for our 2026 Reception cohort.

Tours of the School

You now have the opportunity to take a tour of the school with one of our members of staff. In our classrooms, our teachers will be showcasing the curriculum on offer at Greenside. This will give you time to ask any questions you may have.

We are offering prospective parents/carers the opportunity to join a tour and experience our school during the day on the following dates:

Monday 24th November 9.15am - 10:15am

Monday 24th November 1.30pm - 2:30pm

Tuesday 2nd December 9.15am - 10:15am

Thursday 4th December 1.30pm - 2:30pm

Please contact admin.info@greenside-sch.org, if this would be of interest to you.

Thank You

We hope you have found our open evening informative, and it helps you make your decision.

